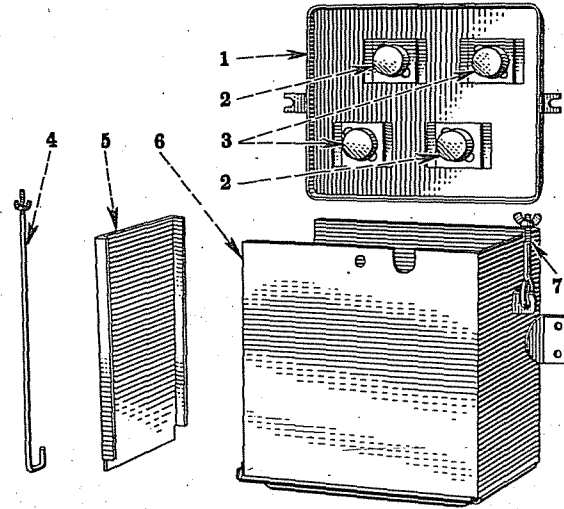


ELECTRICAL SYSTEM



A-14723

Reference numbers only are shown in illustration. Use I H part numbers in ordering.

BATTERY BOX (Special)

1	351 336 R11	COVER, BATTERY BOX, ASSEMBLY	1
		(COMPOSED OF -	
		1 COVER § 351 336 R1	
		2 COVER § 351 337 R1	
		4 RETAINER § 50 942 D	
		2 RUBBER 51 690 D	
		2 RUBBER 65 054 DA)	
2	65 054 DA	RUBBER, BATTERY HOLD-DOWN, LONG	2
3	51 690 D	RUBBER, BATTERY HOLD-DOWN, SHORT	2
4	351 339 R1	SCREW, BATTERY BOX, FRONT	1
	103 127	NUT, WING, 1/4-20NC	1
	Q 391	WASHER, PLAIN, 9/32" I.D. x 5/8" O.D. x No. 18 GA.	1
5	351 334 R1	COVER, FRONT, BATTERY BOX	1
6	351 330 R11	BODY, BATTERY BOX	1
	179 837	SCREW, CAP, HEX-HD., 3/8-16NC x 3/4"	2
	103 321	WASHER, LOCK, 3/8"	2
7	351 340 R1	SCREW, BATTERY BOX, REAR	1
	103 127	NUT, WING, 1/4-20NC	1
	Q 391	WASHER, PLAIN, 9/32" I.D. x 5/8" O.D. x No. 18 GA.	1
§ - NOT SERVICED SEPARATELY			